

iland Secure Cloud BackupSM

Cloud-based backup has become a go-to solution for an enterprise that wants to protect its digital assets. But all clouds are not made equal. Global site options, top-tier networks and 100% availability are key to a successful backup strategy.

why choose iland as your Veeam Cloud Connect target?

iland Secure Cloud Backup leverages Veeam Cloud Connect to provide cloud-based backups for your local virtual guests and data. It allows you to keep an up-to-date copy or secondary copy of your virtualized applications in iland's cloud, restoring files and virtual disks back to your local environment as needed.

iland Secure Cloud Backup uses Veeam Cloud Connect to enable organizations to utilize iland's global data centers and Tier 1 network providers for a backup plan that allows strategic location and optimized access.

employ the right experience and expertise

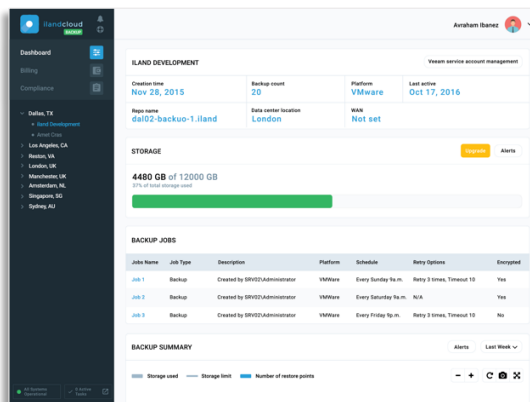
Recognized by analysts as a trusted leader in disaster recovery, iland provides professional services that lead you through cloud-based disaster recovery planning and advise you on the optimal disaster recovery plan for your organization whether this is backup or full replication.

unmatched visibility and management

iland provides the unique capability to monitor and manage your Veeam Backup solution through our Secure Cloud ConsoleSM. The console is an intuitive, self-service interface with powerful features that enable users to:

- Monitor cloud storage usage
- Receive utilization alerts
- Proactively scale up resources on demand
- Gain insight into billing information
- Use analytics to accurately forecast future backup storage needs

This is the same console that can be used to manage iland IaaS and DRaaS solutions, giving you a single pane of glass for all your cloud services.



iland Secure Cloud Backup at a glance

- ✓ Familiar Veeam console for intuitive navigation and management
- ✓ Unmatched visibility and management through the iland Secure Cloud Console
- ✓ Pre-built 100% SLA infrastructure
- ✓ Support for full offsite backup and secondary site backup configurations
- ✓ Robust operating system support
- ✓ Support for VMware and Hyper-V
- ✓ End-to-end encryption of data



why choose iland

- 20+ years supporting customers and their critical workloads
- 97%+ customer satisfaction for technical support
- 8 global data centers in NA, EMEA and APAC with further growth plans
- Consultative, flexible customer relationships
- Leader – Gartner Magic Quadrant for DRaaS 2016 & 2017
- Leader – Forrester Wave for DRaaS Providers 2014 - 2017



simplify data protection

You don't have to worry about complex configuration and setup. Through the same Veeam console used for existing backup and replication tasks, you can add iland as a service provider target. This allows you to replicate to iland-managed enterprise-class infrastructure that is ready to use and powered by highly reputable VMware technology. You can be confident that the performance at your target site will equal production-level.

It makes no difference whether your workloads live in a VMware or a Hyper-V environment. iland supports both platforms providing backup flexibility for your critical data and systems.

Be confident that your data is secure with end-to-end encryption that ensures data is secure during backup; it is secure as it travels across the wire from your data center to iland's Secure CloudSM; and it is secure at rest.

reduce protection costs

Unlike traditional replication and recovery, iland Secure Cloud Backup offers granular replication, allowing you to select only the machines you want to protect and reduce the extra costs associated with backing up everything. We've also designed a simple model for iland Secure Cloud Backup – just pay per GB of storage needed.

- No Setup Fees
- No Per-VM Fees
- No Bandwidth costs
- No charge for our expert customer support

and, the rest of the reasons

There are a host of other reasons to choose iland – and we'd love to highlight just a few more:

- Be confident that you are supported by a 100% infrastructure availability SLA
- Our US locations hold SOC 2 certification. Our EMEA/APAC locations hold ISO 9001/27001 certifications.
- Data is encrypted as it travels across the wire using AES-256 encryption

so, what's next?

Reach out to iland to learn more about iland Secure Cloud Backup and cloud-based disaster recovery, and how we can help safeguard your business.

about iland

iland is a global cloud service provider of secure and compliant hosting for infrastructure (IaaS), disaster recovery (DRaaS), and backup as a service (BaaS). They are recognized by industry analysts as a leader in disaster recovery. The award-winning iland Secure Cloud ConsoleSM natively combines deep layered security, predictive analytics, and compliance to deliver unmatched visibility and ease of management for all of iland's cloud services. Headquartered in Houston, Texas and London, UK, iland delivers cloud services from its data centers throughout the Americas, Europe, Australia and Asia. Learn more at iland.com.

about Veeam

Veeam[®] enables the always-on business by delivering Advanced Data Protection for the Modern Data Center[™]. Veeam recognizes the challenges in keeping a business up and running at all times and addresses them with solutions that provide high speed recovery, verified protection, risk mitigation, complete visibility and data loss avoidance. [Veeam Backup & Replication[™]](#) leverages the enabling technologies of the modern data center, including VMware vSphere, Microsoft Hyper-V, NetApp Storage and HP 3PAR StoreServ, to help organizations meet RPOs and RTOs, save time, mitigate risks, and dramatically reduce capital and operational costs.

iland, the iland logo, and all other iland product or service names are registered trademarks or trademarks of iland Internet Solutions. All other registered trademarks or trademarks belong to their respective companies.