

# iland Catalyst



## What is iland Catalyst?

iland Catalyst is a free tool that provides a mathematically derived analysis of your existing infrastructure, backup and disaster recovery (DR) workloads.

iland engineers developed iland Catalyst to remove the guesswork so you know exactly what resources are needed for your cloud-based solutions. With this analytical engine, you can properly size for the cloud instead of costly over-provisioning or detrimentally under-provisioning.

## Why choose iland Catalyst?

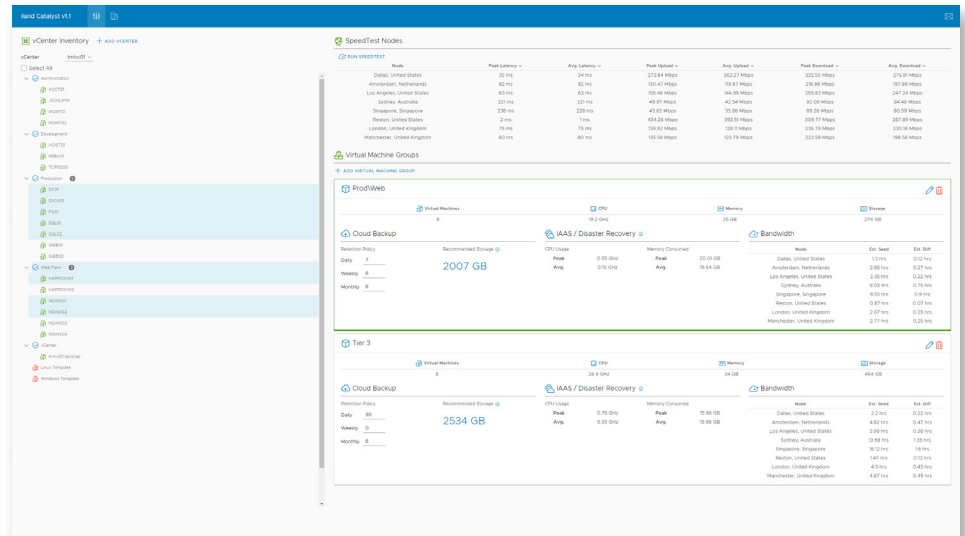
New and existing customers can run iland Catalyst anytime to see a full view of their environment. Resources, storage consumption and general layout are all available within the tool.

Through the easy-to-use interface, you can also create customized groupings for backups, DR and even migration.

iland Catalyst quickly and efficiently provides the answer to the age-old cloud consumption question... How much do we need?

### Features:

- ▶ Easy to install, lightweight, dependency-free analysis tool
- ▶ Catalogs and presents Virtual Center environment(s) in an easy-to-use UI
- ▶ Creates customized workload bundles for analysis
- ▶ Determines bandwidth needed to move to any of the iland global clouds
- ▶ Updates workload bundles with estimates for data seeding or backup change rates, allowing users to identify the best site for their needs



## Stay secure with iland

iland is one of only four organizations certified for GDPR under the United Kingdom's British Standards Institutes (BSI) Personal Information Management System (PIMS) – BS 10012:2017. This regulation specifically addresses the handling of personal data for both Controller and Processor entities. Go ahead – rely on us.

## So, what's next?

Reach out to iland to learn more about our secure cloud offerings, and how we can help your business grow.