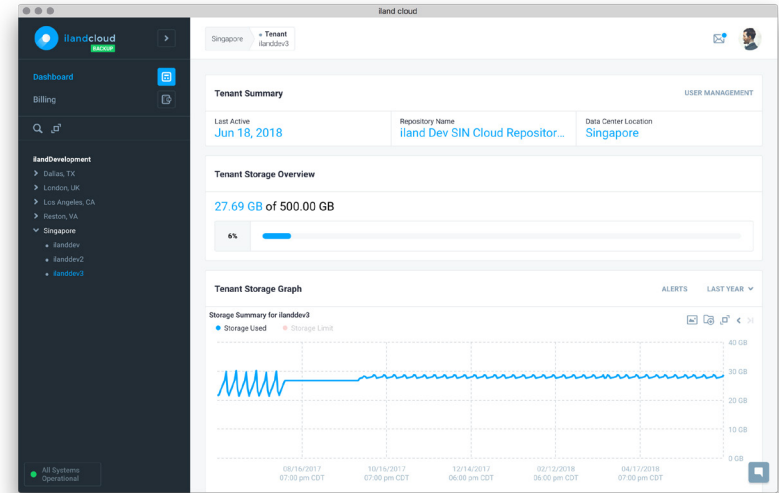


# iland Secure Cloud Backup<sup>SM</sup>

Cloud-based backup has become a go-to solution for an enterprise that wants to protect its assets. But... all clouds are not created equal. Global site options, top-tier networks and 100% availability are key to a successful backup strategy.



## Why Choose iland Secure Cloud Backup with Veeam?

### Why Choose iland As Your Veeam Cloud Connect Target?

- > Provides access to an up-to-date copy, or secondary copy, of your virtualized applications in iland's cloud, restoring files and virtual disks back to your local environment as needed
- > Veeam Cloud Connect enables organizations to utilize iland's global data centers, and Tier 1 network providers, to have a strategic off-site backup plan with optimized access

### Unmatched Visibility and Management

iland provides the unique capability to monitor and manage your Veeam Backup solution through our Secure Cloud Console<sup>SM</sup>. The console is a single pane of glass for all iland cloud services. As an intuitive, self-service interface its powerful features enable users to:

- > Monitor cloud storage usage
- > Receive utilization alerts
- > Proactively scale up resources on demand
- > Gain insight into billing information
- > Use analytics to accurately forecast future backup storage needs

### Employ the Right Experience and Expertise

- > Recognized by analysts to be the leading provider of disaster recovery solutions
- > Whether a backup or full replication, iland provides best in class customer service and professional services that guide you through cloud-based data protection planning

