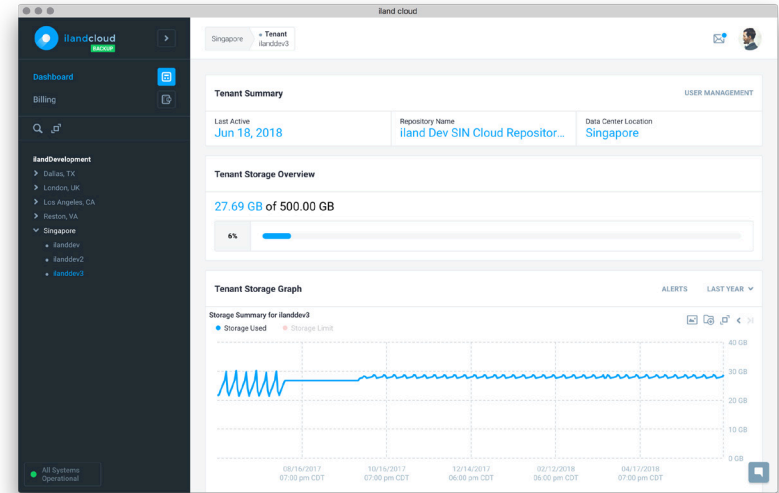


iland Secure Cloud BackupSM

Cloud-based backup has become a go-to solution for an enterprise that wants to protect its assets. But... all clouds are not created equal. Global site options, top-tier networks and 100% availability are key to a successful backup strategy.



Why Choose iland Secure Cloud Backup with Veeam?

Why Choose iland As Your Veeam Cloud Connect Target?

- > Provides access to an up-to-date copy, or secondary copy, of your virtualized applications in iland's cloud, restoring files and virtual disks back to your local environment as needed
- > Veeam Cloud Connect enables organizations to utilize iland's global data centers, and Tier 1 network providers, to have a strategic off-site backup plan with optimized access

Unmatched Visibility and Management

iland provides the unique capability to monitor and manage your Veeam Backup solution through our Secure Cloud ConsoleSM. The console is a single pane of glass for all iland cloud services. As an intuitive, self-service interface its powerful features enable users to:

- > Monitor cloud storage usage
- > Receive utilization alerts
- > Proactively scale up resources on demand
- > Gain insight into billing information
- > Use analytics to accurately forecast future backup storage needs

Employ the Right Experience and Expertise

- > Recognized by analysts to be the leading provider of disaster recovery solutions
- > Whether a backup or full replication, iland provides best in class customer service and professional services that guide you through cloud-based data protection planning

